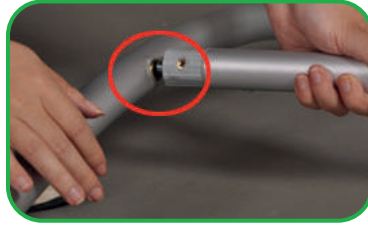
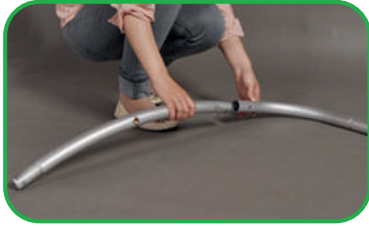


The Cobra

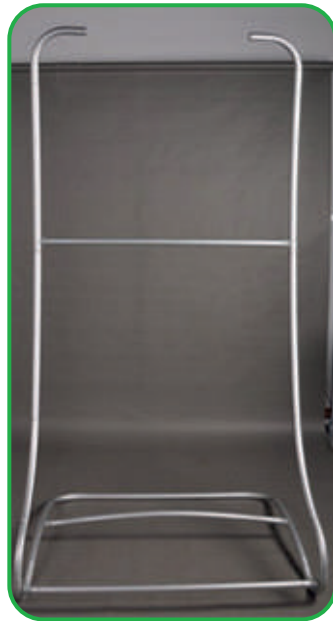
ASSEMBLY INSTRUCTIONS



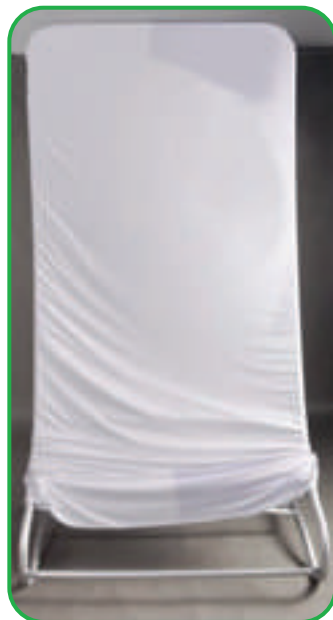
To Connect sections, press in button and push section in until the button pops out of the hole.



Start at the base, create sides of frame before adding in horizontal bar



Continue to build the frame up from the sides, adding in the horizontal bars when required until you complete the frame at the top.



Slide the graphic over the top of the frame.

Guide the cover down the frame, try to keep the seams in line with the edge of the frame.

Ease the cover over the bottom front curve

Tension the cover end over the end of the frame.

Zip the cover up

