

1. Check contents.
2. Place the weight over the main pole. (see fig 2a)  
Ensure that the PTFE sheet lines the inside of the joint casing and the washer is in the bottom before connecting the curved tube with the joint to the main pole. (see fig 2b)
3. Slide the sleeve of the flag over the curved tube and down onto the main pole. (see fig3)
4. Attach the weight onto the rope loop at the bottom of the flag. (see fig 4)
5. Drive vehicle onto wedge (allow maximum clearance to avoid damage to vehicle). (see fig 5)
6. Mount the pole onto the wedge ensuring the pole covers the full length of the spigot (Make sure the arm and flag can rotate freely clear of obstacles). (see fig 6)

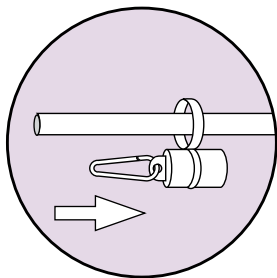


Fig 2b.

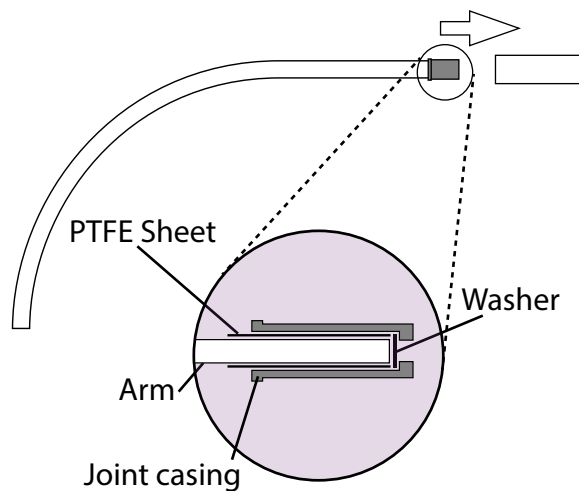


Fig 2b.

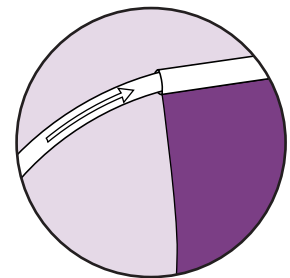


Fig 3.

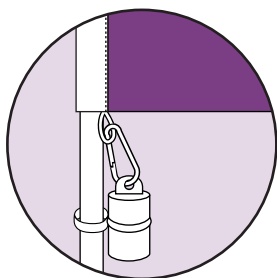


Fig 4.

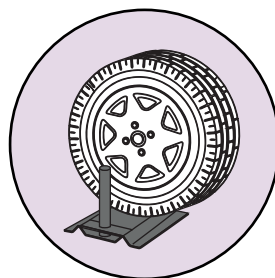


Fig 5.

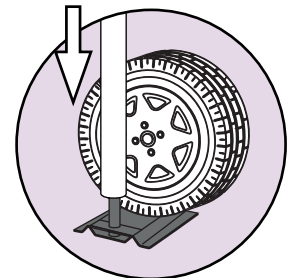
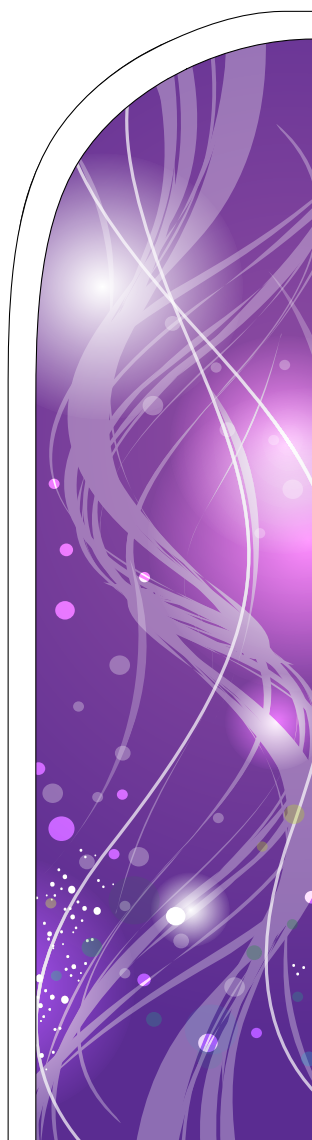


Fig 6.

**[NEVER remove the vehicle from the 'Wedge' without first removing the pole]**

Curved Arm



Main Ali Pole  
1.5m Curved Arm and joint  
Weight  
Wedge

CONTENTS

### Feather Pole Specifications

Pole Size	4.8m	5.8m
Length of curved top section	0.8m	0.8m
Inside diameter of curved section	25.63mm	25.63mm
Outside diameter of curved section	28.57mm	28.57mm
Length of main section	4m	5m
Inside diameter of main section	40.39mm	40.39mm
Outside diameter of main section	44.45mm	44.45mm
Wall thickness	2mm	2mm
Pole Weight	4kg	5kg
Max flag size	80cm x 320cm	80cm x 420cm

### Wedge Specifications

Length	405mm
Width	316mm
Overall Height	239mm
Height of spigot	200mm
Internal diameter of spigot	28mm
External Diameter of spigot	40mm
Weight	6kg

Main Ali Section

## WARNINGS

**Remove pole from wedge before moving car / van**

**Do not fly flag when wind speed exceeds Force 7 (32mph)**

**It remains the responsibility of the user to establish the suitability of the product /s for the use/s to which they are put**