

1. Check contents. Open the clamp by undoing the bolt with the allen key provided.
2. Place the half with the square cut out, around the upright of the barrier (the larger aperture) and place the ground socket in the adjacent smaller aperture making sure that the bottom of the socket is on the ground. (see fig 1)
3. Place the other half of the clamp around the uprights and secure the two sections back together with the bolt. (see fig 2) Do not tighten at this stage.
4. Repeat the process with the second clamp further up the barrier upright. This must be on the vertical section, not the curved and a minimum of 25cm above the first clamp. (see fig 3)
5. Ensure that both the clamps are horizontal by using a spirit level, once level tighten up the bolts. (see fig 4).
6. Place the weight over the main pole. (see fig 5a) Ensure that the PTFE sheet lines the inside of the joint casing and the washer is in the bottom before connecting the curved tube with the joint to the main pole. (see fig 5b)
7. Slide the sleeve of the flag over the curved tube and down onto the main pole. (see fig 6)
8. Attach the weight onto the rope loop at the bottom of the flag. (see fig 7)
9. Mount the pole into the ground socket ensuring that the pole reaches the bottom of the ground socket. (see fig 8)

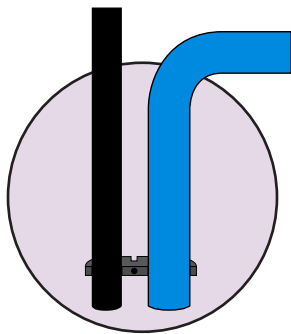


Fig 1.

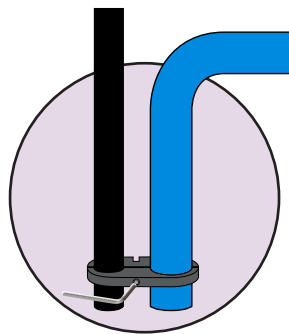


Fig 2.

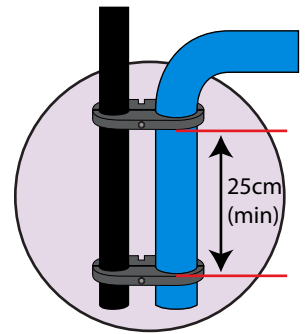


Fig 3.

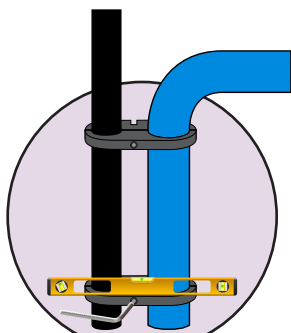


Fig 4.

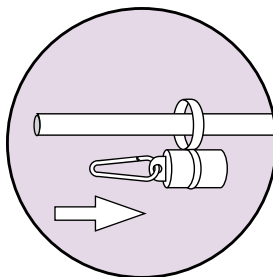


Fig 5a.

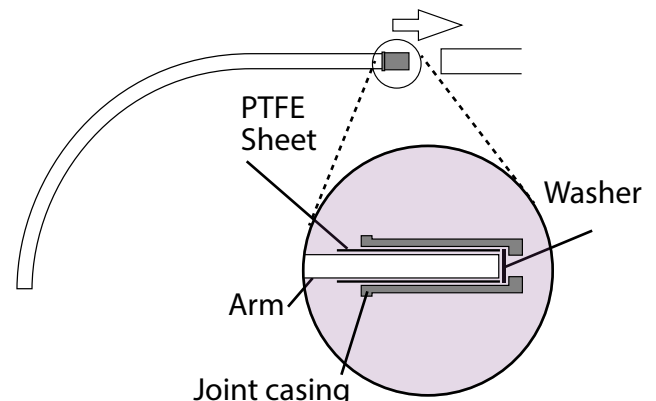


Fig 5b.

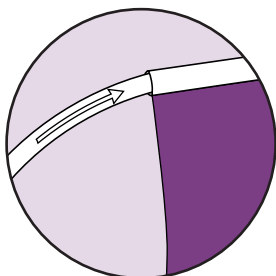


Fig 6.

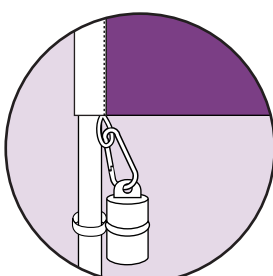


Fig 7.

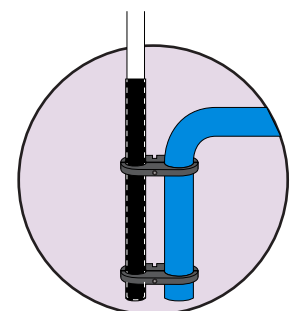
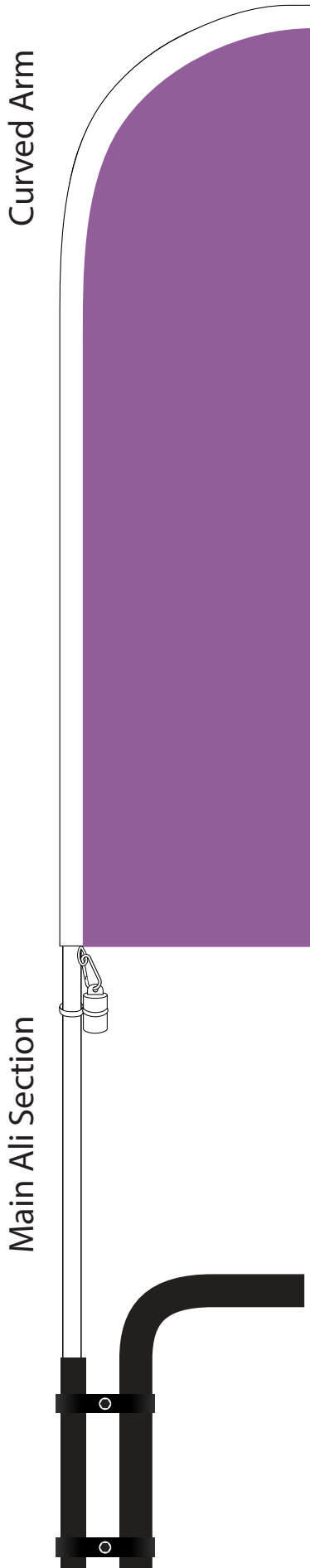


Fig 8.



Main Ali Pole
1.5m Curved Arm and joint
Weight
Wedge

D-Barrier Clamp Kit:
Ground socket
Clamps x 2
Allen Key

CONTENTS

Feather Pole Specifications

Pole Size	4.8m	5.8m
Length of curved top section	0.8m	0.8m
Inside diameter of curved section	25.63mm	25.63mm
Outside diameter of curved section	28.57mm	28.57mm
Length of main section	4m	5m
Inside diameter of main section	40.39mm	40.39mm
Outside diameter of main section	44.45mm	44.45mm
Wall thickness	2mm	2mm
Weight	4kg	5kg
Max flag size	80cm x 320cm	80cm x 420cm

Clamp kit Specifications

Ground Socket internal diameter	46.5mm
Ground Socket external diameter	53.5mm
Length of Ground Socket	600mm
Socket weight	0.3kg
Clamp dimensions	198mm x 100mm x 20mm
Small hole diameter	55mm
Large hole diameter	77mm
Clamp weight	1.54kg
Total Weight of kit (2 clamps + ground socket)	3.38kg

WARNINGS

Always use the clamps in conjunction with the ground socket to prevent damage to the pole

Do not fly flag when wind speed exceeds Force 7 (32mph)

It remains the responsibility of the user to establish the suitability of the product /s for the use/s to which they are put